

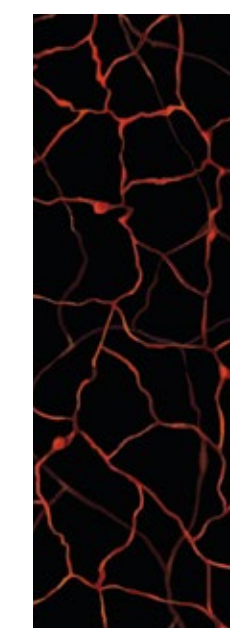
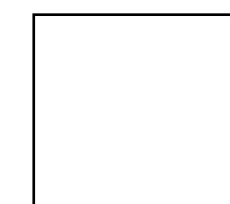
Australian
ITALIAN SPORTSWEAR

**FW22
SPORTSWEAR
COLLECTION
URBAN**

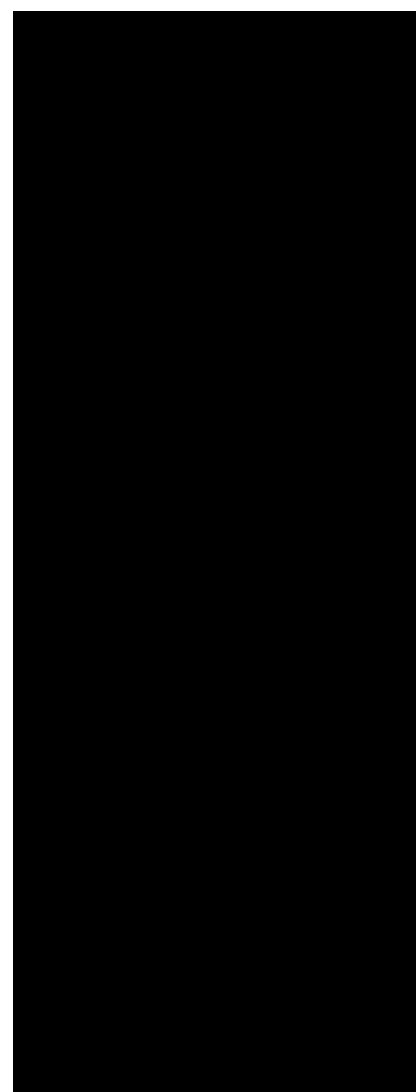
Lo stile sportivo di Australian ha portato modelli classici ad un livello superiore, distinguendosi per le stampe colorate a color block con big logos e ricami ben visibili su felpe, track jacket, t-shirt e pantaloni; un armonioso accostamento di colori e grafiche da sempre facenti parte del DNA del brand, il tutto arricchito da dettagli di nuova generazione e vestibilità urban.

Australian's sporty style has taken classic models to a higher level, distinguished by colorful color block prints with big logos and clearly visible embroideries on sweatshirts, track jackets, t-shirts and trousers; a harmonious combination of colors and graphics that have always been part of the brand's DNA, all enriched by new generation details and urban fit.

URBAN: MOOD AND COLOURS



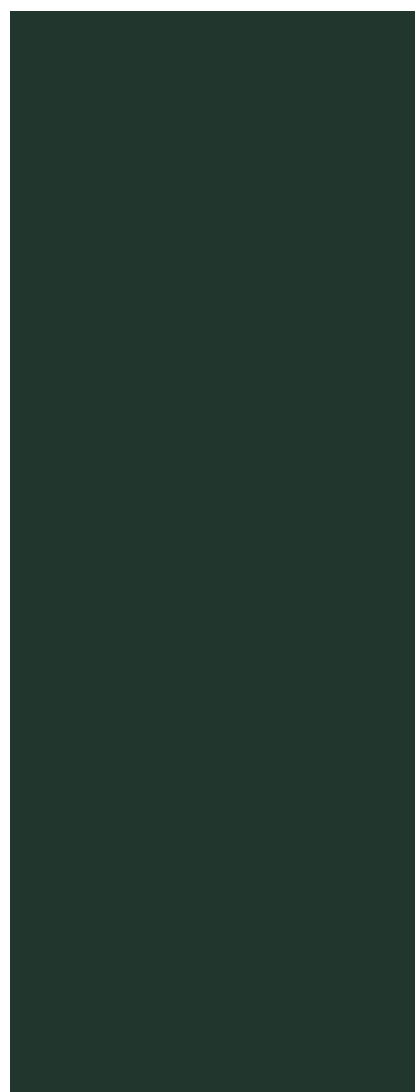
URBAN: PALETTE



BLACK 003



LAVA 149
PANTONE BRIGHT RED C



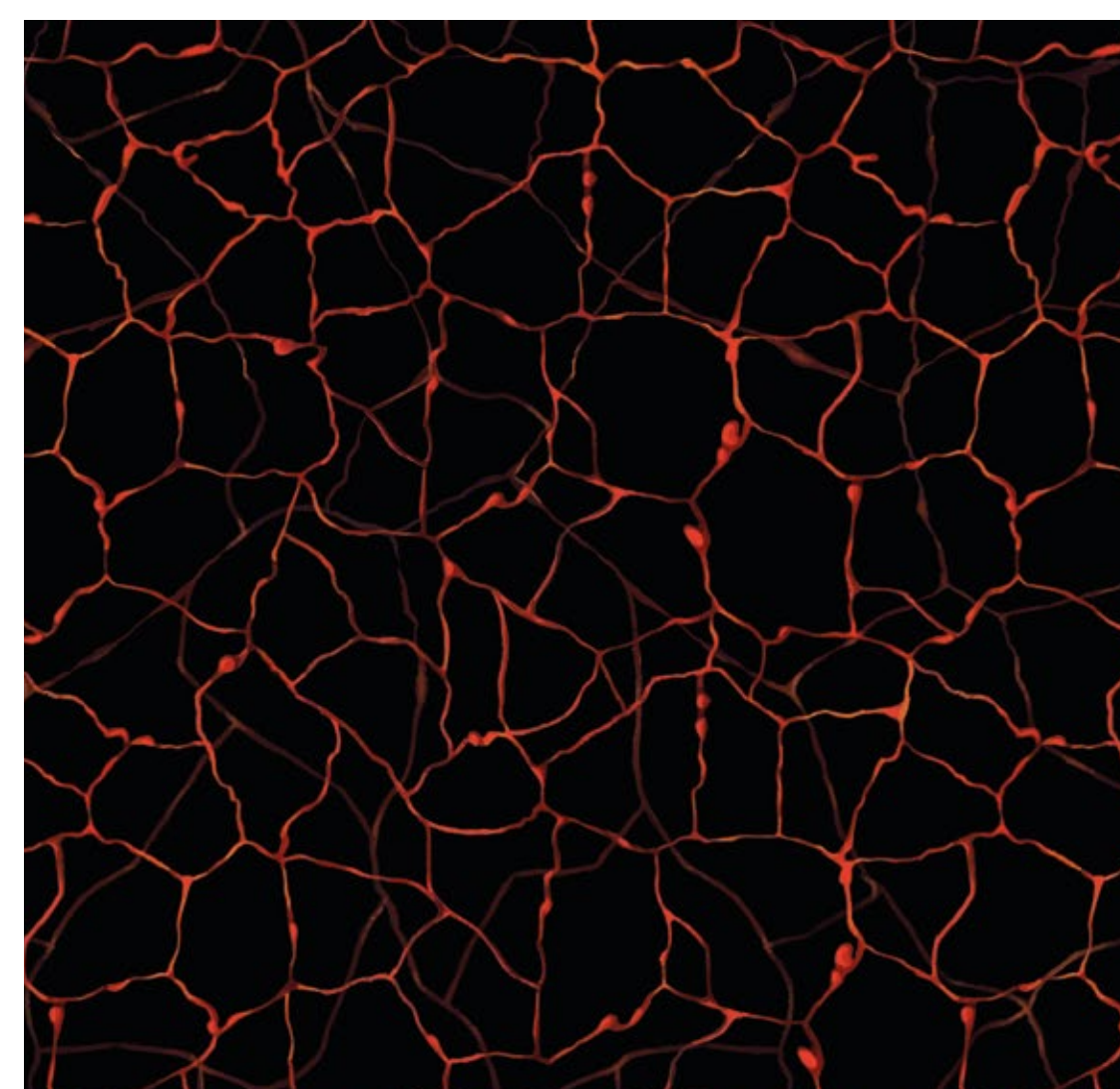
BOTTLE GREEN 018
PANTONE 5605C



STEEL GREY 963
PANTONE 424C



WHITE 002



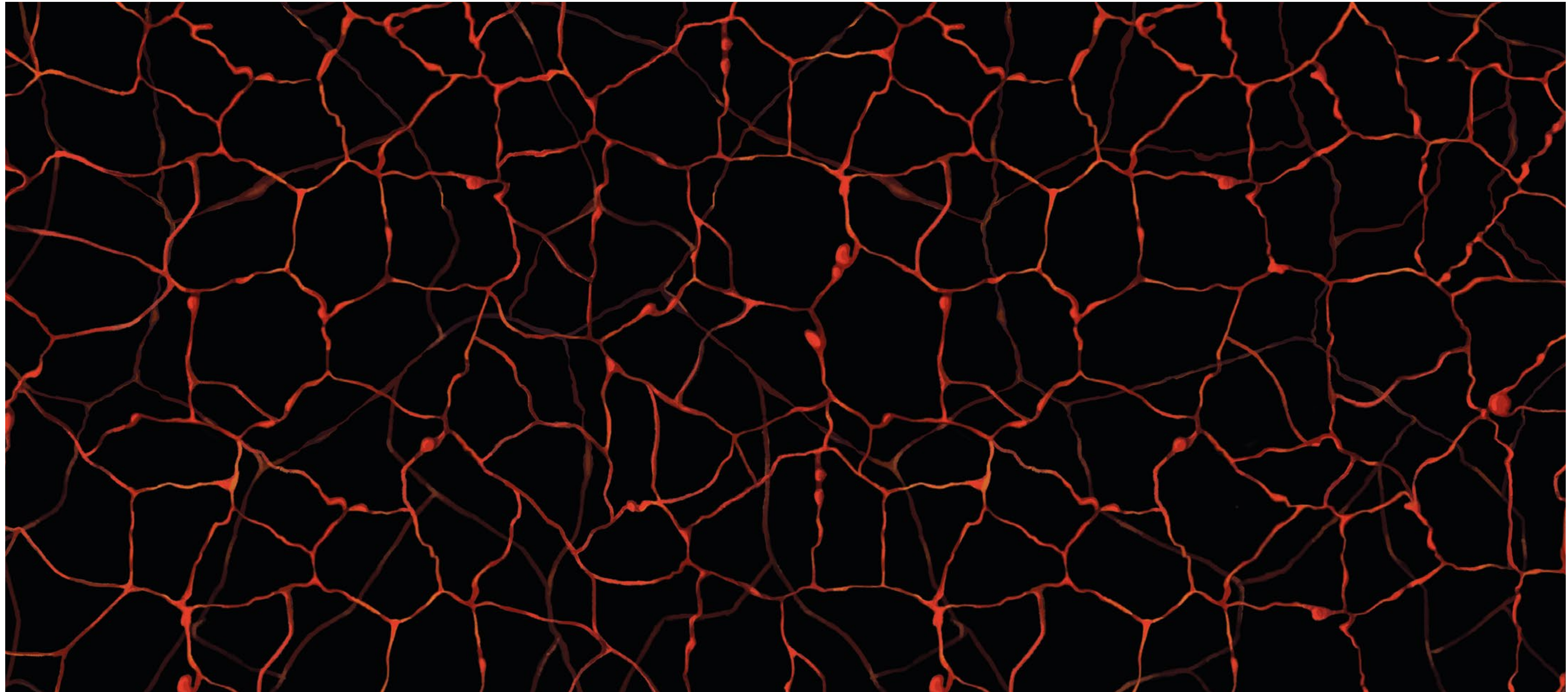
MAGMA ALL OVER

URBAN: GROUP



FW22

MAGMA PRINT: ALL OVER



SWUFE0035 - 3D LOGO HOODIE



- Felpa invernale con cappuccio e coulisse regolabile
- Tasche applicate a marsupio
- Bordo e polsi in costina elasticizzata
- Logo 3D in rilievo sul davanti
- Made in Italy

- *Winter sweatshirt with hood and adjustable drawstring*
- *Kangaroo patch pockets*
- *Hem and cuffs in elasticated rib*
- *3D logo embossed on the front*
- *Made in Italy*

SWUPA0001 - RIB CUFF PANTS



- Pantalone in felpa invernale
- Vestibilità slim
- Elastico in vita con coulisse regolabile
- Bordi alle caviglie in costina elasticizzata con zip invisibile all'interno
- Logo ricamato
- Made in Italy

- *Winter fleece trousers*
- *Slim fit*
- *Elastic waist with adjustable drawstring*
- *Elastic rib borders at the ankles with invisible zip inside*
- *Embroidered logo*
- *Made in Italy*

SWUTS0039 - 3D LOGO T-SHIRT



- T-shirt in cotone
- Regular fit
- Collo in costina elasticizzata
- Logo 3D in rilievo sul davanti
- Made in Italy

- *Cotton T-shirt*
- *Regular fit*
- *Collar in elasticated rib*
- *3D logo embossed on the front*
- *Made in Italy*

SWUFE0036 - TEK FLEECE CREWNECK



- Girocollo in felpa invernale
- inserti in slam sulle maniche
- Tasche applicate a marsupio
- Bordo e polsi in costina elasticizzata
- Stampa logo rifrangente sulla manica destra
- Logo ricamato
- Made in Italy

- *Winter fleece crewneck*
- *slam inserts on the sleeves*
- *Kangaroo patch pockets*
- *Hem and cuffs in elasticated rib*
- *Reflective logo print on the right sleeve*
- *Embroidered logo*
- *Made in Italy*

SWUPA0049 - TEK FLEECE PANTS



- Pantalone in felpa invernale
- Nuova vestibilità
- Tasca applicata in slam con zip rovesciata in contrasto
- Elastico in vita con coulisse regolabile
- Fondo con elastico alla caviglia
- Stampa logo rifrangente sulla gamba destra
- Logo ricamato
- Made in Italy

- *Winter fleece trousers*
- *New fit*
- *Patch pocket in slam with contrasting reverse zip*
- *Elastic waist with adjustable drawstring*
- *Bottom with elastic at the ankle*
- *Reflective logo print on the right leg*
- *Embroidered logo*
- *Made in Italy*

SWUGC0040 - TEK FLEECE JACKET



- Giacca in felpa invernale con cappuccio e coulisse regolabile
- Zip davanti in contrasto
- inserti in slam sul davanti
- Bordo e polsi in costina elasticizzata
- Logo rifrangente sul davanti
- Made in Italy

- *Winter fleece jacket with hood and adjustable drawstring*
- *Front zip in contrast*
- *Slam inserts on the front*
- *Hem and cuffs in elasticated rib*
- *Reflective logo on the front*
- *Made in Italy*

SWUTS0040 - TEK FLEECE T-SHIRT



- T-shirt in cotone
- Regular fit
- Inserto in slam sul davanti
- Collo in costina elasticizzata
- Logo rifrangente sul davanti
- Made in Italy

- *Cotton T-shirt*
- *Regular fit*
- *Slam insert on the front*
- *Collar in elasticated rib*
- *Reflective logo on the front*
- *Made in Italy*

SWUGC0041 - MAGMA JACKET



- Giacca in felpa invernale con cappuccio e coulisse regolabile
- inserto in smash stampato all over magma sul davanti
- Tasca applicata a marsupio
- Bordo e polsi in costina elasticizzata
- Stampa logo rifrangente sul cappuccio
- Logo ricamato
- Made in Italy

- *Winter fleece jacket with hood and adjustable drawstring*
- *all over magma printed smash insert on the front*
- *Kangaroo patch pocket*
- *Hem and cuffs in elasticated rib*
- *Reflective logo print on the hood*
- *Embroidered logo*
- *Made in Italy*

SWUFE0037 - MAGMA HOODIE



- Felpa invernale con cappuccio e coulisse regolabile
- Tasca applicata a marsupio
- inserti in smash stampato all over magma
- bordo e polsi in costina elasticizzata
- logo ricamato
- Made in Italy

- *Winter sweatshirt with hood and adjustable drawstring*
- *Kangaroo patch pocket*
- *all over magma printed smash inserts*
- *hem and cuffs in elasticated rib*
- *embroidered logo*
- *Made in Italy*

SWUPA0048 - MAGMA PANTS



- Pantaloni in felpa invernale
 - Elastico in vita con coulisse regolabile
 - Costina al fondo
 - Insetto in smash stampato all over magma
 - Tasche laterali
 - Stampa logo rifrangente sulla gamba sinistra
 - Logo ricamato
 - Made in itlay
-
- *Winter fleece trousers*
 - *New fit*
 - *Patch pocket in slam with contrasting reverse zip*
 - *Elastic waist with adjustable drawstring*
 - *Bottom with elastic at the ankle*
 - *Reflective logo print on the right leg*
 - *Embroidered logo*
 - *Made in Italy*

SWUTS0041 - MAGMA T-SHIRT



- T-shirt in cotone
- Regular fit
- Inserto in smash stampato all over magma
- Collo in costina elasticizzata
- Logo rifrangente sul dietro
- Logo ricamato
- Made in Italy

- *Cotton T-shirt*
- *Regular fit*
- *All over magma printed smash insert*
- *Collar in elasticated rib*
- *Reflective logo on the back*
- *Embroidered logo*
- *Made in Italy*

SWUTU0006 - MAGMA TRACKSUIT



Tuta in "smash" foderata

Giacca:

- Fodera in rete per una maggiore traspirabilità
- Stampa sublimatica magma
- Taschino sul carè davanti
- Zip frontale e sulle tasche
- Bordo e polsi elasticizzati
- Logo ricamato

Pantalone:

- Inserto in smash stampato all over magma
- Fondo con elastico alle caviglie
- Coulisce regolabile in vita
- Logo rifrangente sulla gamba sinistra
- Logo ricamato
- Made in Italy

Lined "smash" tracksuit

Jacket:

- *Mesh lining for greater breathability*
- *Magma sublimation printing*
- *Pocket on the front carè*
- *Front zip and pockets*
- *Elasticated hem and cuffs*
- *Embroidered logo*

Trousers:

- *All over magma printed smash insert*
- *Bottom with elastic at the ankles*
- *Adjustable drawstring at the waist*
- *Reflective logo on the left leg*
- *Embroidered logo*
- *Made in Italy*



follow us



info@australian.it

www.australian.it